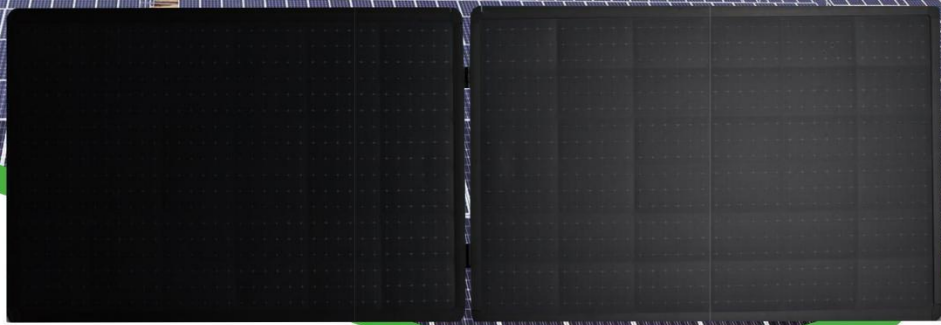
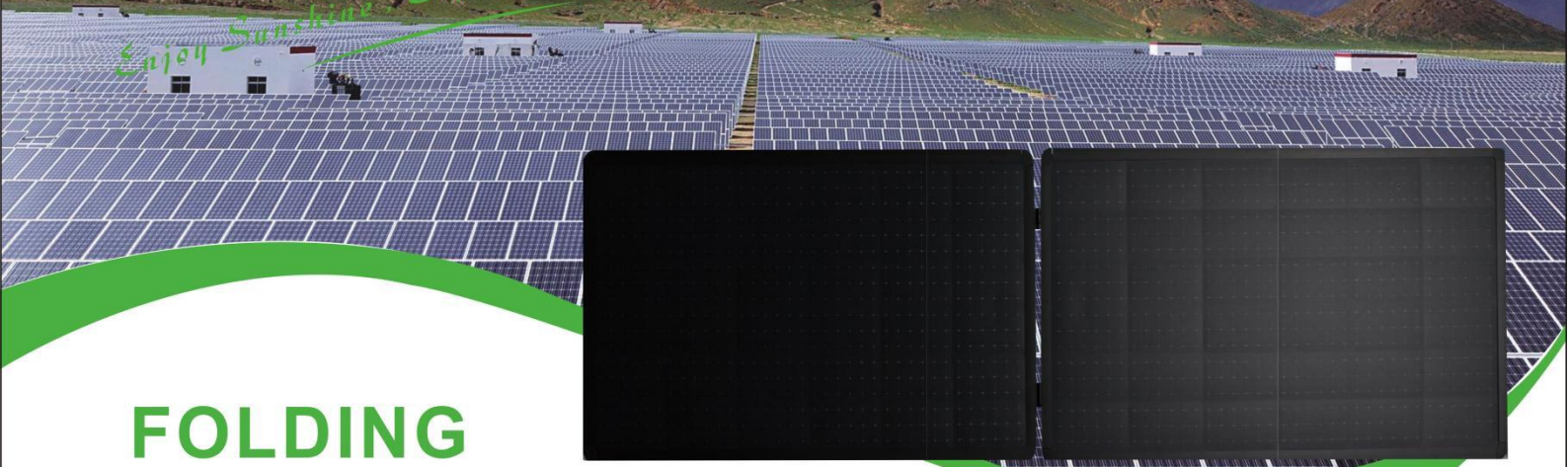




Enjoy Sunshine. Enjoy Life



# FOLDING MONOCRYSTALLINE SOLAR MODULE

**QJMxxxW (xxx=21-200WATT)**

## QJ Solar linear warranty

**12** 12 Years  
Limited Product Warranty

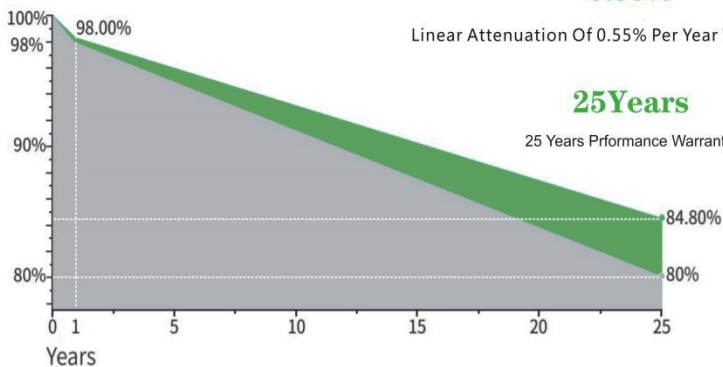
**25** 25 Years  
Performance Warranty

**New Linear Power Warranty**  
**Standard Linear Power Warranty**






**2%**  
The First Year Degradation

**0.55%**  
Linear Attenuation Of 0.55% Per Year Within 25 Years

**25Years**  
25 Years Performance Warranty



## The solar panel characteristics

-  SMBB cell design
-  Low Degradation
-  High Reliability
-  Excellent Low-light Performance
-  PID Resistant



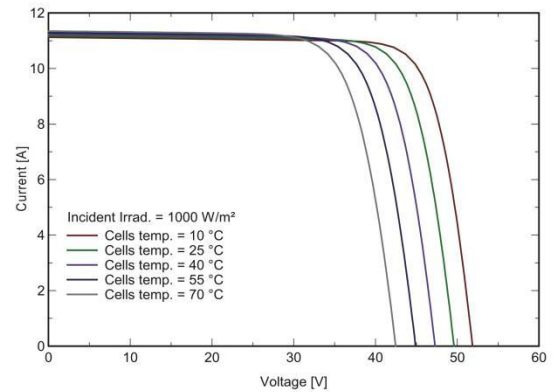
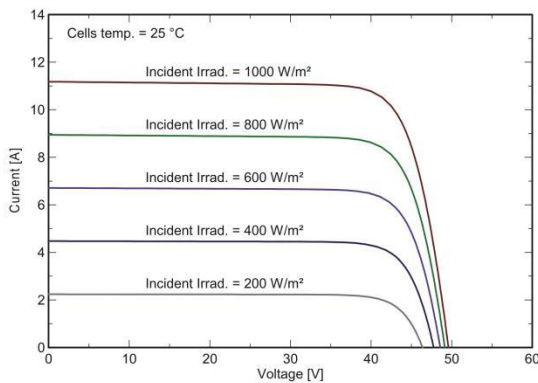
# FOLDING MONOCRYSTALLINE QJMxxxW(xxx=21-200WATT)



## ELECTRICAL PERFORMANCE:

Module Type	QJM21		QJM60		QJM100		QJM120		QJM150		QJM200	
	STC	NOCT	STC	NOCT	STC	NOCT	STC	NOCT	STC	NOCT	STC	NOCT
Maximum Power (Pmax)	21WP	16WP	60WP	48WP	100WP	80WP	120WP	96WP	150WP	120WP	200WP	160WP
Maximum Power Voltage (Vmp)	19.08V	18.72V	12.72V	12.00V	19.08V	18.72V	17.46V	17.46V	18.2V	18.5V	17.46V	17.5V
Maximum Power Current (Imp)	1.1A	0.85A	4.72A	4A	5.24A	4.27A	6.87A	5.5A	8.25A	6.49A	11.45A	9.14A
Open-circuit Voltage (Voc)	22.68V	22.68V	22.68V	21.6V	22.68V	21.96V	21.42V	21.42V	21.4V	22V	21.42V	21.8V
Short-circuit Current (Isc)	1.17A	0.91A	5A	4.24A	5.56A	4.53A	7.35A	5.83A	8.81A	6.88A	12.2A	9.69A
Operating Temperature(°C)	-40°C-+85°C											
Maximum system voltage	1500VDC (IEC)											
Maximum series fuse rating	25A											
Power tolerance	0-+3%											
Temperature coefficients of Pmax	-0.35%/°C											
Temperature coefficients of Voc	-0.28%/°C											
Temperature coefficients of Isc	0.048%/°C											
Nominal operating cell temperature (NOCT)	45±2°C											

## ELECTRICAL CURVES:



## MECHANICAL CHARACTERISTICS:

Front Cover	Tempered AR coated glass, 3.2mm
Solar Cell	Monocrystalline Perc/TOPCon
Frame	Anodized aluminum alloy
Junction Box	IP68, 3 diodes
Cables & Plug connectors	900mm, 2.5mm/4mm & MC4compatible;customized
Folded dimension	550*380*30mm
Unfolded dimension	1115*550*5mm
Module Weight	3.1kg

## QJ SOLAR Cixi City Rixing Electronics Co., Ltd.

Add: No.69,Mingde Road,Zhoushiang Town,Cixi City,Ningbo,Zhejiang Province ,China  
Tel: 86-574-63441748 Fax: 86-574-63456148  
Email: sales@qjsolar.com Web: www.qjsolar.com



\*STC: Irradiance 1000W/m<sup>2</sup>

Cell Temperature 25°C

AM=1.5

NOCT: Irradiance 800W/m<sup>2</sup>

Ambient Temperature 20°C

AM=1.5

Wind Speed 1m/s